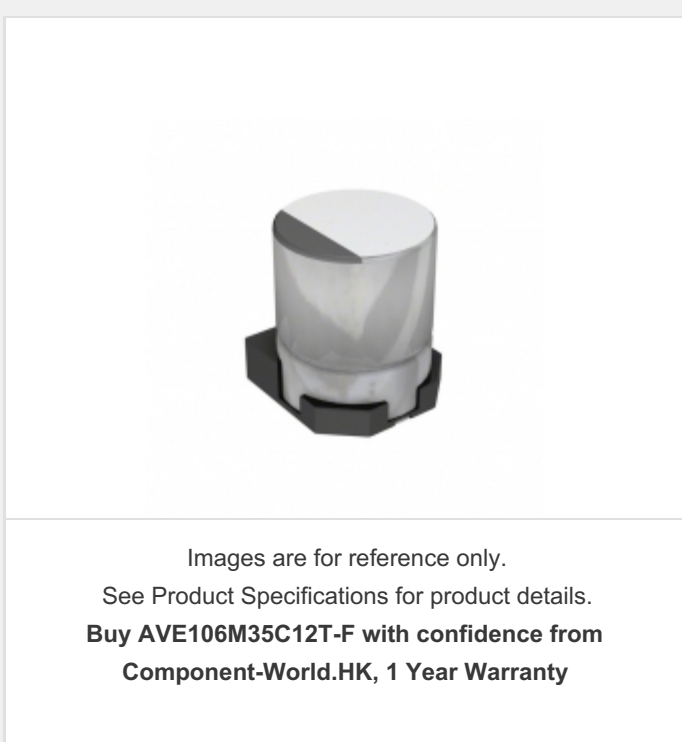


**AVE106M35C12T-F**



**Part Number:** [AVE106M35C12T-F](#)  
**Manufacturer:** [Cornell Dubilier Electronics](#)  
**Description:** CAP ALUM 10UF 20% 35V SMD  
**Data sheet:** [AVE Series](#)

**RoHS Status:** Lead free / RoHS Compliant  
**Ship From:** Hong Kong  
**Shipment Way:** DHL/Fedex/TNT/UPS/EMS

[Request For Quotation](#)

PRODUCT PARAMETER			
Part Number	AVE106M35C12T-F	Manufacturer	<a href="#">Cornell Dubilier Electronics</a>
Description	CAP ALUM 10UF 20% 35V SMD	Lead Free Status / RoHS Status	Lead free / RoHS Compliant
Quantity Available	1207296 pcs	Data sheet	<a href="#">AVE Series</a>
Category	<a href="#">Capacitors</a>	Voltage - Rated	35V
Tolerance	±20%	Surface Mount Land Size	0.209" L x 0.209" W (5.30mm x 5.30mm)
Size / Dimension	0.197" Dia (5.00mm)	Series	AVE
Ripple Current @ Low Frequency	34mA @ 120Hz	Ratings	-
Polarization	Polar	Packaging	Tape & Reel (TR)
Package / Case	Radial, Can - SMD	Other Names	338-1810-2 AVE106M35C12TF
Operating Temperature	-40°C ~ 85°C	Mounting Type	Surface Mount
Moisture Sensitivity Level (MSL)	1 (Unlimited)	Manufacturer Standard Lead Time	23 Weeks
Lifetime @ Temp.	2000 Hrs @ 85°C	Lead Spacing	-
Lead Free Status / RoHS Status	Lead free / RoHS Compliant	Height - Seated (Max)	0.209" (5.30mm)
ESR (Equivalent Series Resistance)	19.89 Ohm @ 120Hz	Detailed Description	10µF 35V Aluminum Electrolytic Capacitors Radial, Can - SMD 19.89 Ohm @ 120Hz 2000 Hrs @ 85°C
Capacitance	10µF	Applications	General Purpose

Component-World.com is a Reliable Stocking Distributor of Electronic Components. We specialize in all Cornell Dubilier Electronics series electronic components. We have 1207296 pieces of Cornell Dubilier Electronics AVE106M35C12T-F in stock available now. Request a quote from electronics components distributor at Component-World.com, our sales team will contact you within 24 hours.  
RFQ Email: [info@Components-World.com](mailto:info@Components-World.com)

**RELATED PRODUCTS**

	Part#: <a href="#">AVE106M16A12T-F</a> Description: CAP ALUM 10UF 20% 16V SMD	Manufacturers: <a href="#">Cornell Dubilier Electronics</a>	<a href="#">RFQ</a>
	Part#: <a href="#">AVE107M06D16T-F</a> Description: CAP ALUM 100UF 20% 6.3V SMD	Manufacturers: <a href="#">Cornell Dubilier Electronics</a>	<a href="#">RFQ</a>
	Part#: <a href="#">AVE107M25X16T-F</a> Description: CAP ALUM 100UF 20% 25V SMD	Manufacturers: <a href="#">Cornell Dubilier Electronics</a>	<a href="#">RFQ</a>
	Part#: <a href="#">AVE106M50D16T-F</a> Description: CAP ALUM 10UF 20% 50V SMD	Manufacturers: <a href="#">Cornell Dubilier Electronics</a>	<a href="#">RFQ</a>
	Part#: <a href="#">AVE107M10E16T-F</a> Description: CAP ALUM 100UF 20% 10V SMD	Manufacturers: <a href="#">Cornell Dubilier Electronics</a>	<a href="#">RFQ</a>
	Part#: <a href="#">AVE107M10X16T-F</a> Description: CAP ALUM 100UF 20% 10V SMD	Manufacturers: <a href="#">Cornell Dubilier Electronics</a>	<a href="#">RFQ</a>
	Part#: <a href="#">AVE107M16E16T-F</a> Description: CAP ALUM 100UF 20% 16V SMD	Manufacturers: <a href="#">Cornell Dubilier Electronics</a>	<a href="#">RFQ</a>
	Part#: <a href="#">AVE106M25C12T-F</a> Description: CAP ALUM 10UF 20% 25V SMD	Manufacturers: <a href="#">Cornell Dubilier Electronics</a>	<a href="#">RFQ</a>
	Part#: <a href="#">AVE030020ER200KE</a> Description: RES ADJ .20 OHM 300W 10%	Manufacturers: <a href="#">Electro-Films (EFI) / Vishay</a>	<a href="#">RFQ</a>
	Part#: <a href="#">AVE107M16X16T-F</a> Description: CAP ALUM 100UF 20% 16V SMD	Manufacturers: <a href="#">Cornell Dubilier Electronics</a>	<a href="#">RFQ</a>
	Part#: <a href="#">AVE106M63E16T-F</a> Description: CAP ALUM 10UF 20% 63V SMD	Manufacturers: <a href="#">Cornell Dubilier Electronics</a>	<a href="#">RFQ</a>
	Part#: <a href="#">AVE105M50B12T-F</a> Description: CAP ALUM 1UF 20% 50V SMD	Manufacturers: <a href="#">Cornell Dubilier Electronics</a>	<a href="#">RFQ</a>
	Part#: <a href="#">AVE107M04D16T-F</a> Description: CAP ALUM 100UF 20% 4V SMD	Manufacturers: <a href="#">Cornell Dubilier Electronics</a>	<a href="#">RFQ</a>
	Part#: <a href="#">AVE030020ER160KE</a> Description: RES ADJ .16 OHM 300W 10%	Manufacturers: <a href="#">Electro-Films (EFI) / Vishay</a>	<a href="#">RFQ</a>
	Part#: <a href="#">AVE107M25E16T-F</a> Description: CAP ALUM 100UF 20% 25V SMD	Manufacturers: <a href="#">Cornell Dubilier Electronics</a>	<a href="#">RFQ</a>
	Part#: <a href="#">AVE106M10B12T-F</a> Description: CAP ALUM 10UF 20% 10V SMD	Manufacturers: <a href="#">Cornell Dubilier Electronics</a>	<a href="#">RFQ</a>
	Part#: <a href="#">AVE030020ER800KE</a> Description: RES ADJ .80 OHM 300W 10%	Manufacturers: <a href="#">Electro-Films (EFI) / Vishay</a>	<a href="#">RFQ</a>
	Part#: <a href="#">AVE104M50B12T-F</a> Description: CAP ALUM 0.1UF 20% 50V SMD	Manufacturers: <a href="#">Cornell Dubilier Electronics</a>	<a href="#">RFQ</a>
	Part#: <a href="#">AVE106M2AF24T-F</a> Description: CAP ALUM 10UF 20% 100V SMD	Manufacturers: <a href="#">Cornell Dubilier Electronics</a>	<a href="#">RFQ</a>
	Part#: <a href="#">AVE106M16B12T-F</a> Description: CAP ALUM 10UF 20% 16V SMD	Manufacturers: <a href="#">Cornell Dubilier Electronics</a>	<a href="#">RFQ</a>

Related keywords for **AVE106M35C12T-F**

<a href="#">Cornell Dubilier Electronics AVE106M35C12T-F</a>	<a href="#">AVE106M35C12T-F distributor</a>	<a href="#">AVE106M35C12T-F supplier</a>	<a href="#">AVE106M35C12T-F price</a>
<a href="#">AVE106M35C12T-F download datasheet</a>	<a href="#">AVE106M35C12T-F datasheet</a>	<a href="#">AVE106M35C12T-F stock</a>	<a href="#">buy AVE106M35C12T-F</a>
<a href="#">Cornell Dubilier Electronics AVE106M35C12T-F</a>	<a href="#">Cornell Dubilier AVE106M35C12T-F</a>	<a href="#">Cornell Dubilier Electronics (CDE)</a>	<a href="#">AVE106M35C12T-F</a>